

**PRODUCT NAME:**  
SAND & GREASE INTERCEPTOR

**DESCRIPTION:**  
WITH TWO COMPARTMENTS  
4000 TO 6000 GALLONS

**DESIGN SPECIFICATIONS**  
DESIGN LOAD: H-20 TRAFFIC RATED

WITH DRY SOIL CONDITIONS (WATER LEVEL BELOW TANK). SUITABLE SUB-BASE BEDDED WITH GRANULAR MATERIAL SHALL BE PREPARED TO HANDLE ANTICIPATED LOADS. FOR COMPLETE DESIGN AND PRODUCT INFORMATION, PLEASE CONTACT PRO-CAST PRODUCTS.

PRO-CAST PRODUCTS RESERVES THE RIGHT TO MAKE CHANGES TO PRODUCT DESIGN AND/OR DIMENSIONS WITHOUT NOTICE. PLEASE CONTACT PRO-CAST PRODUCTS WHENEVER NECESSARY FOR CONFIRMATION OR ADVICE ON PRODUCT DESIGN.

**NOTES:**

1. NOT USED
2. REFER TO SPECIFICATION SHEET NOS. S-251 & S-252
3. REFER TO SPECIFICATION SHEET NO. S-201
4. REFER TO SPECIFICATION SHEET NO. S-250

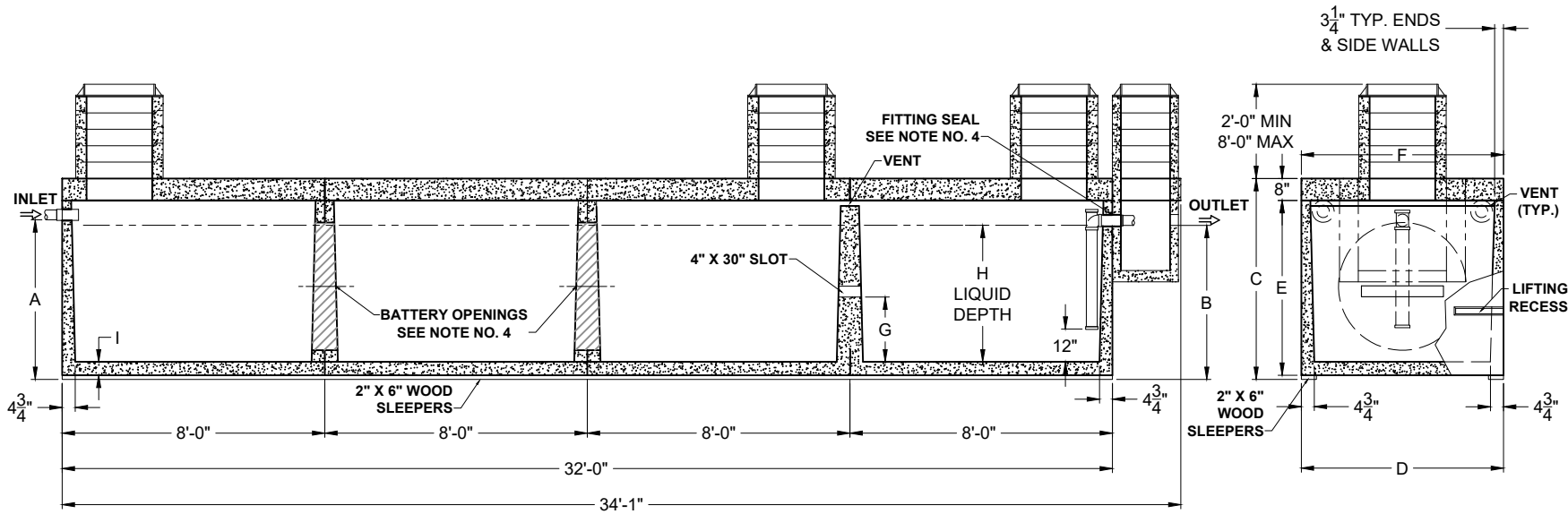
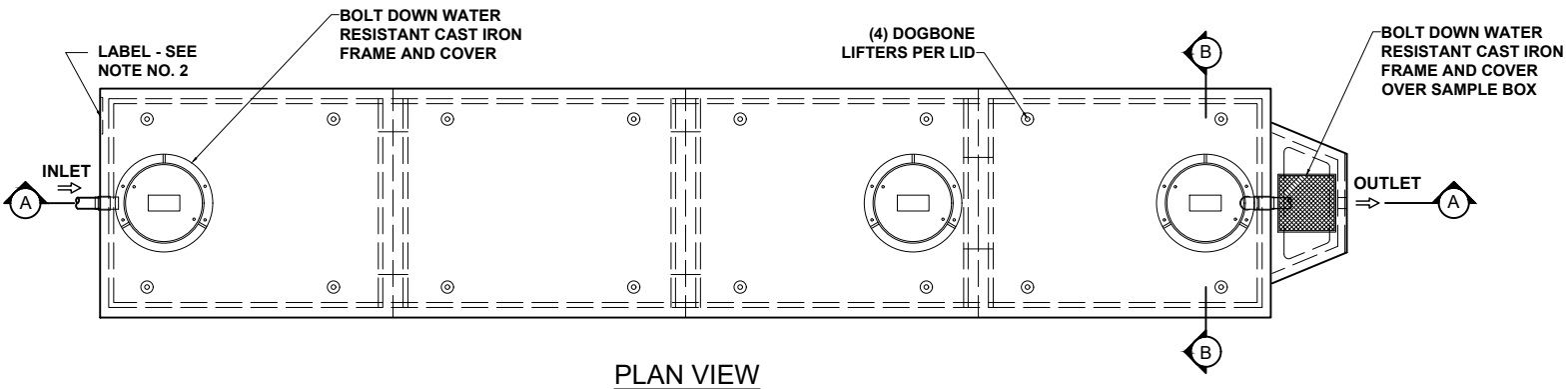
**SCALE:** DO NOT SCALE

**DRAWN BY:** TPC 12.20.2024

**REVISED BY:**

**CHECKED BY:**

**DRAWING NO.**  
**SG-004**



SECTION THRU "A-A"

SECTION THRU "B-B"

(2) COMPARTMENTS

ALL DIMENSIONS ARE IN INCHES & WEIGHTS IN LBS - (RISER WT. NOT INCLUDED)										EXCAVATION SPECIFICATIONS				
MODEL	A	B	C	D	E	F	G	H	I	WEIGHT	LENGTH	WIDTH	BELOW INLET	TANK HEIGHT
PC G-4-4000-HD	50	48	63	74	55	74	24 3/4	41 1/2	4 1/2	58,040	37'-0"	9'-2"	4'-2"	5'-5"
PC G-4-5000-HD	59	57	72	74	64	74	29 1/4	50 1/2	4 1/2	62,900	37'-0"	9'-2"	4'-11"	6'-2"
PC G-4-6000-HD	62 1/2	60 1/2	75 1/2	85	67 1/2	85	30 3/4	53 1/2	5	73,380	37'-0"	10'-1"	5'-2 1/2"	6'-5 1/2"